

UAG: Configure Integrated Network Load Balancing

Skill level: Intermediate

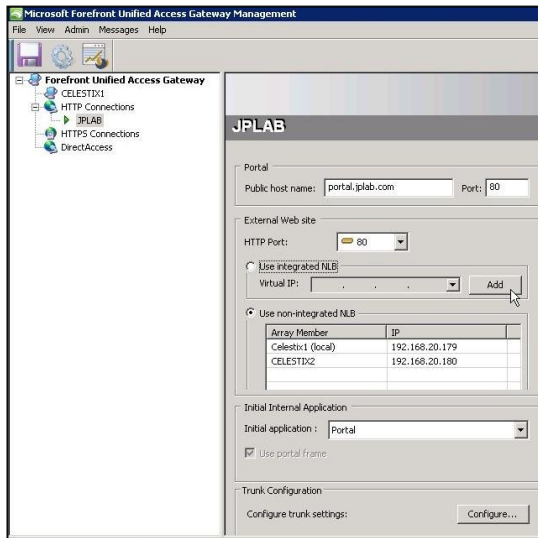
Requires: UAG Configuration console

This document will provide instructions to configure UAG for integrated NLB. Before proceeding with the following instructions, make sure you have a designated Virtual IP address available.

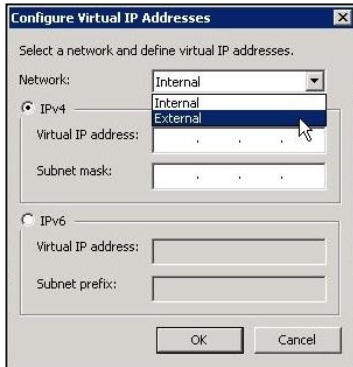
Note: These configurations only need to be applied to the array manager.

To Configure NLB:

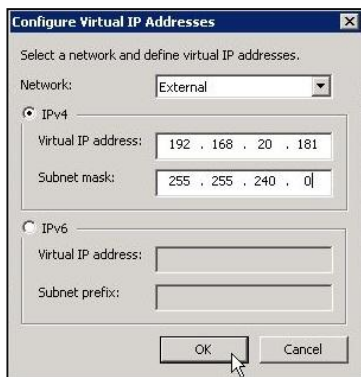
1. RDP or KVM into the UAG appliance.
2. Navigate to **Start/All Programs/Microsoft Forefront UAG/Forefront UAG Management**.
3. Select the trunk you would like to load balance. In the External Web site field, choose **Use integrated NLB**.
4. In the Network Load Balancing window, click **Add**.



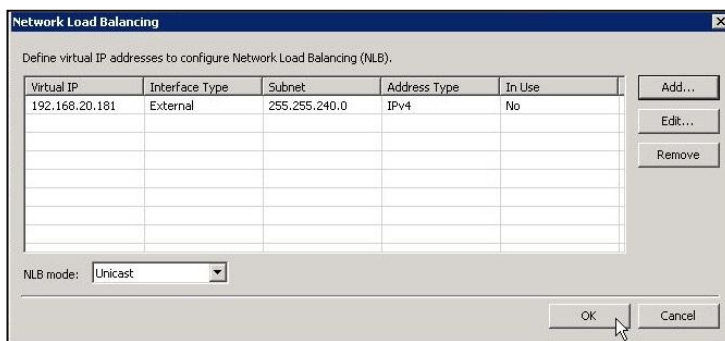
- In the **Configure Virtual IP Addresses** window, use the drop-down menu to select the adapter you would like to load balance.



- Choose **IPv4** or **IPv6**, enter the **Virtual IP address** and the **Subnet mask**. Click **OK**.

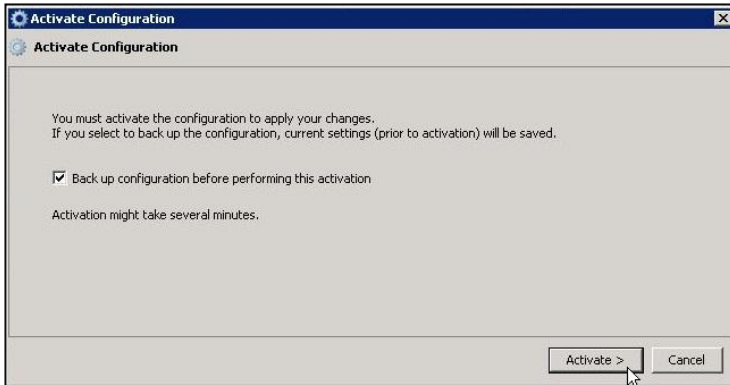


- For the **NLB mode**, use the drop-down menu to select either **Unicast**, **Multicast** or **Multicast with IGMP**. Click **OK**.

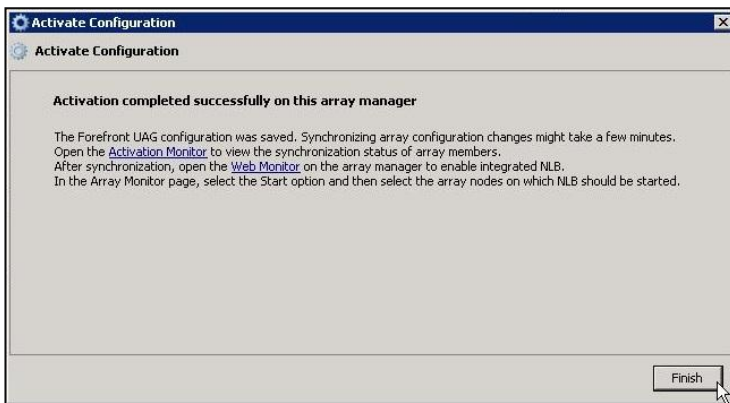


- Click the Activation icon to activate the configuration.

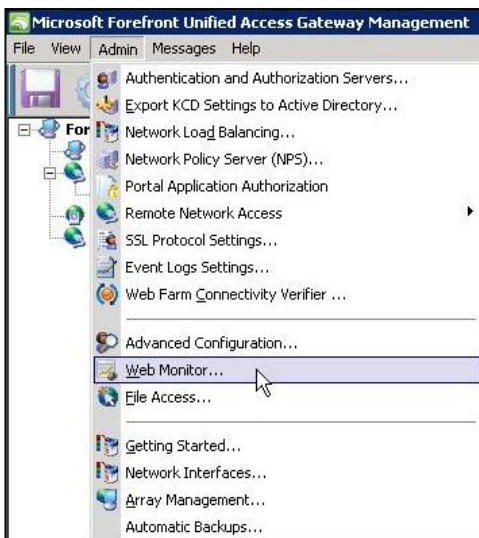
9. Check **Back up configuration before performing this activation** if you want to have the option to revert to the previous configuration.



10. Click **Finish**.



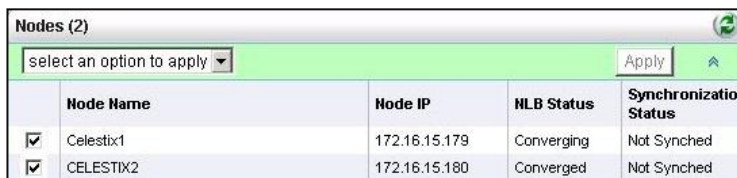
11. Click **Admin** and open the **Web Monitor**.



12. Click the **Current Status** of the **Array Monitor**.



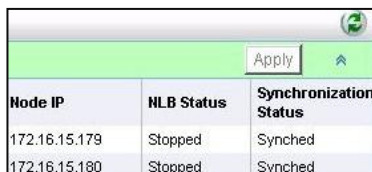
13. Check the nodes you would like to load balance.



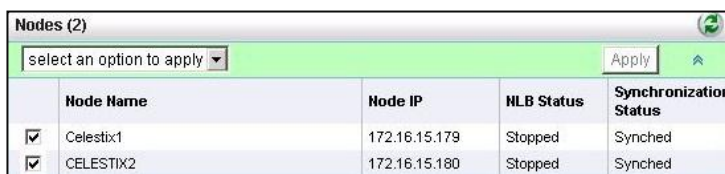
14. Select **Start** from the drop-down menu.



15. Click **Apply**.



16. The **NLB Status** should show the nodes converging and then proceed to a stopped state. The **Synchronization Status** should also show **Synched**.



You have completed the steps for configure integrated NLB on Celestix WSA appliance.