

# Establishing two-factor authentication with FortiGate and HOTPin authentication server from Celestix Networks

## Contact Information

[www.celestix.com](http://www.celestix.com)

[info@celestix.com](mailto:info@celestix.com)

Celestix Networks USA	3125 Skyway Court, Fremont, California, 94539, USA	+1 510 668 0700
Celestix Networks EMEA	30 Queens Road, Reading, RG1 4AU, United Kingdom	+44 (0)118 959 6198
Celestix Networks APAC	1 Changi North Street 1, #02-02, Singapore 498789	+65 6781 0700

## Integration completed by

Kimberley Wong Kwan Lun

[klun@celestix.com](mailto:klun@celestix.com)

This document outlines the steps required to integrate the FortiGate111C with Celestix HOTPin two-factor authentication. The following steps are detailed within this guide:

- Adding users
- Enabling user self provisioning
- Configuring RADIUS integration in FortiGate
- Adding FortiGate as a RADIUS client in Celestix HOTPin
- Testing the login process

## Steps to Configure Standalone Celestix HOTPin v3.5

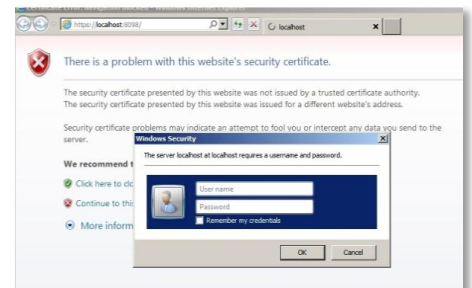
### Prerequisites

This document assumes you have followed the steps in the HOTPin Quick Start Guide, and either installed HOTPin Server v3.5, or configured your HSA Appliance ready for use. If you haven't already done so, please refer to the Quick Start Guide to complete this before proceeding.

The Quick Start Guide can be found here: <http://www.celestix.com/hotpin-tl.html>

### Step 1: Launch HOTPin Administration

Launch the HOTPin Management GUI using the shortcut icon on the desktop. This will load the default web browser. HOTPin ships with a default certificate to provide HTTPS security. The browser will display a certificate security warning, this is normal, choose **“Continue to this website.”**



Microsoft Windows User Access Control will prompt for a username and password. Enter the administrator credentials.

**NOTE** - depending on the web browser and the default settings, the message might be slightly different.

### Step 2: Adding users

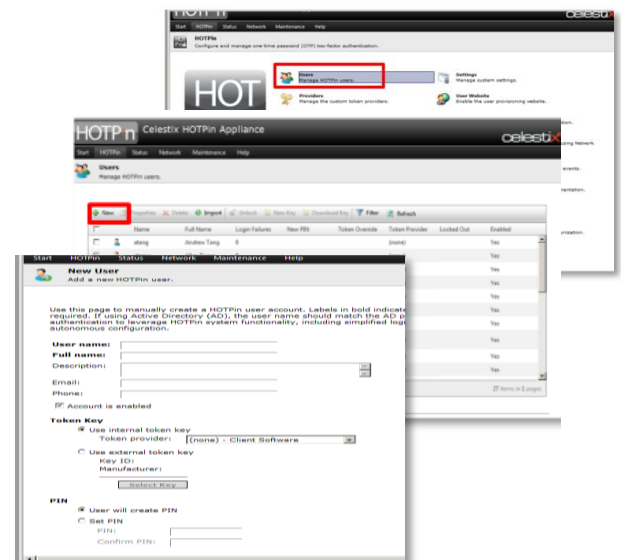
To add users go to **HOTPin > Users**.

Click on **‘New.’** Complete the user settings for an end user.

**Token Key:** (none) – Client Software (default)

**PIN:** User will create PIN

For production and full installation we recommend you make use of the Active Directory import feature within HOTPin, and then enable Active Directory Synchronization. This can be achieved easily and simply through the main Management GUI.



### Step 3: Configure the user provisioning website

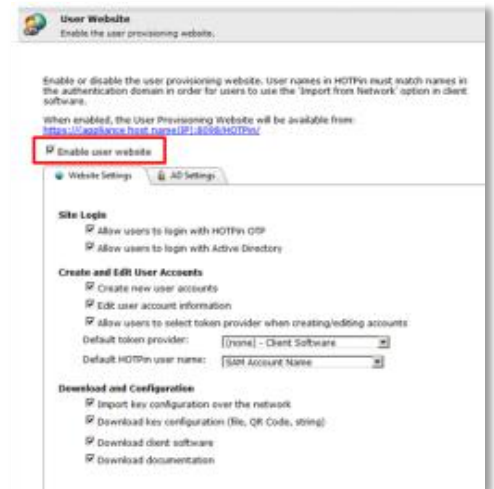
From the main Management GUI, go to **User Website** and tick the **Enable user website** box.

This will allow your users to provision a variety of tokens by accessing a user provisioning portal, but it is important to configure this in advance of giving access.

Once enabled, default access to the site is: [https://\(appliancehostname|IP\):8098/hotpin/](https://(appliancehostname|IP):8098/hotpin/)

This site is not enabled by default; it must be turned on by Administrators.

At this point, the basic configuration for Celestix HOTPin is complete, and we'll return to the User Provisioning Website later.



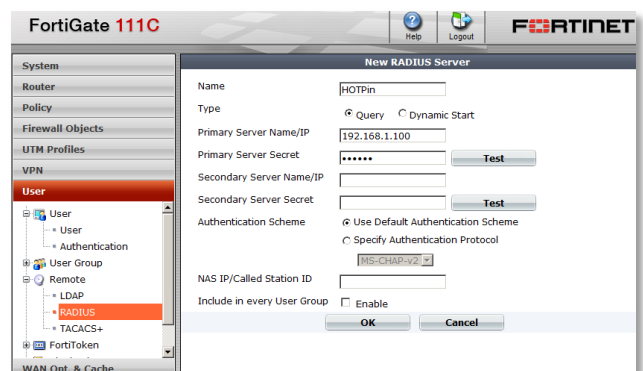
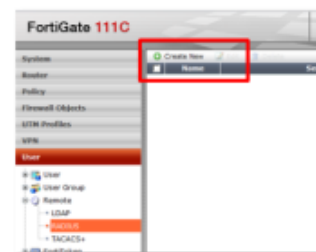
## Configure RADIUS integration in FortiGate

### Step 4: Add Authentication Server

Go to **User > Remote > RADIUS**.

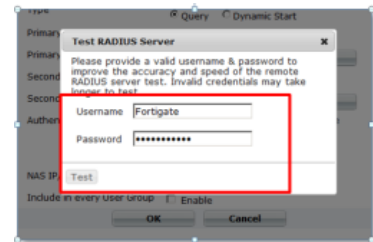
Select **Create New**, you are automatically redirected to the **New RADIUS Server** page. Complete the fields:

- **Name:** Enter the name of the HOTPin appliance.
- **Type:** Select either Query or Dynamic Start.
- **Primary Server Name/IP:** Enter IP address of the HOTPin appliance.
- **Secondary Server Name/IP:** Enter the IP address of secondary RADIUS server, if you have one.
- **Authentication Scheme:** Select **Use Default Authentication Scheme** to authenticate with the default method.
  - Select **Specify Authentication** to override the default authentication method and choose a protocol from the drop down box.
- **NAS IP/Called Station ID:** Optionally enter the NAS IP address.
- **Include in every User Group:** Select the enable check box.
- Click **OK**.



## Step 5: Test connection to Celestix HOTPin

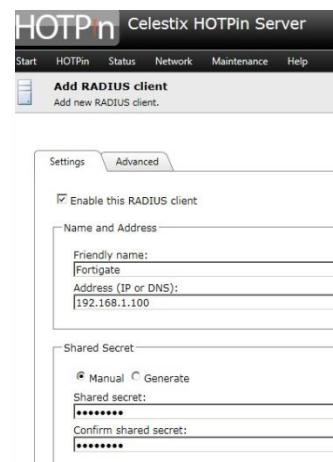
Click on **Test** to check whether FortiGate is able to connect to the HOTPin appliance. Use the HOTPin administrative username and password. Once FortiGate is able to connect to HOTPin, click **OK**.



## Step 6: Enabling RADIUS client on Celestix HOTPin

Go to **HOTPin > NPS Radius > RADIUS clients > New**.  
 Tick **Enable this RADIUS client**.  
 Enter name and IP address of the FortiGate box.  
 Apply shared secret.

This completes the integration process.  
 Next we'll test the login process.



## Testing the login process

Celestix HOTPin supports the following platforms for generating a one-time password. Generate a one-time password using any of the client software below.

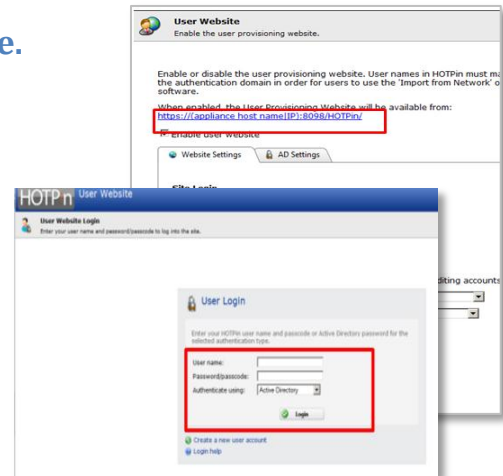
- Microsoft Windows
- MacOS
- iOS devices (iPhones and iPads)
- Android devices
- Windows phone devices
- Blackberry devices.



## Step 7: Log on to end user provisioning website.

Go to User Website and click on the link for example this URL  
[https://\(appliancehostname|IP\):8098/hotpin/](https://(appliancehostname|IP):8098/hotpin/)

After you have downloaded the HOTPin app to your Smart Device, log on to the end user provisioning site with your Active Directory credentials.



## Step 8: Create Token Key

Go to **Token Key > QR Code**.

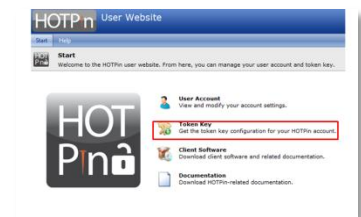
**Enter QR code passphrase:**

Create a passphrase of at least 6 characters.

**Confirm passphrase.**

**Code size:** Select the image size.

**Generate QR Code:** Click to create the image.



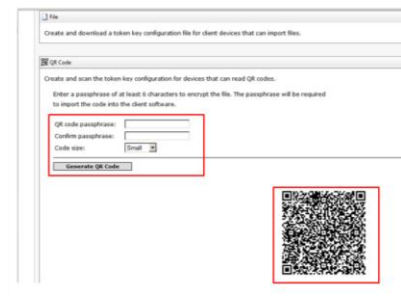
Open the HOTPin app on your smart device.

Choose **Import from QR Code**.

**Scan** the QR Code.

Enter the **passphrase**.

Click on **Import** (Iphone) or **OK** with Android).



You are now able to generate a one time password and this completes the one time device provisioning process.

Log on back to the user provisioning website and choose HOTPin to authenticate.

## Further Help

For further help, go to <http://www.celestix.com>