

Login

Applies to: 6400, 8400 appliances

Once the IPMI address has been set through the front panel, access the UI through a web browser using that address. Illustration 1 provides a reference for the login page.

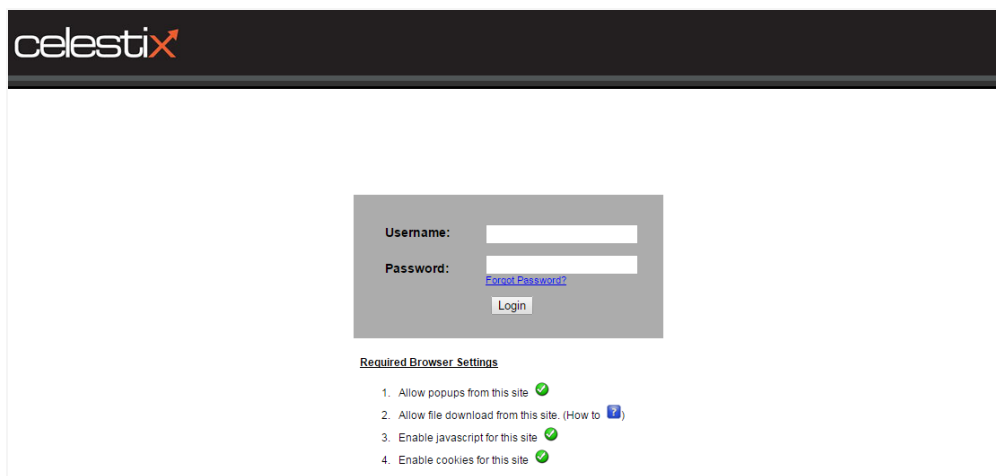


Illustration 1: IPMI Login Screen

Note: **Required Browser Settings** lists browser functionality necessary to access the UI. Disabled functions will limit the usability of the IPMI management tool. Check marks and X marks indicate functionality is enabled or disabled.

Log in to IPMI

1. Enter the IPMI IP address in a web browser:
`https://(IPMI IP address)`

Note: HTTP access becomes available if a problem arises with the certificate installed for IPMI authentication.

2. Enter the default administrative credentials:

Instruction Set (continued)

Note: The user name and password are case-sensitive; the brackets are included in the password.

Username: root

Password: [Celest1x]

3. Click **Login**.

The UI screen opens; Illustration 2 provides a reference.

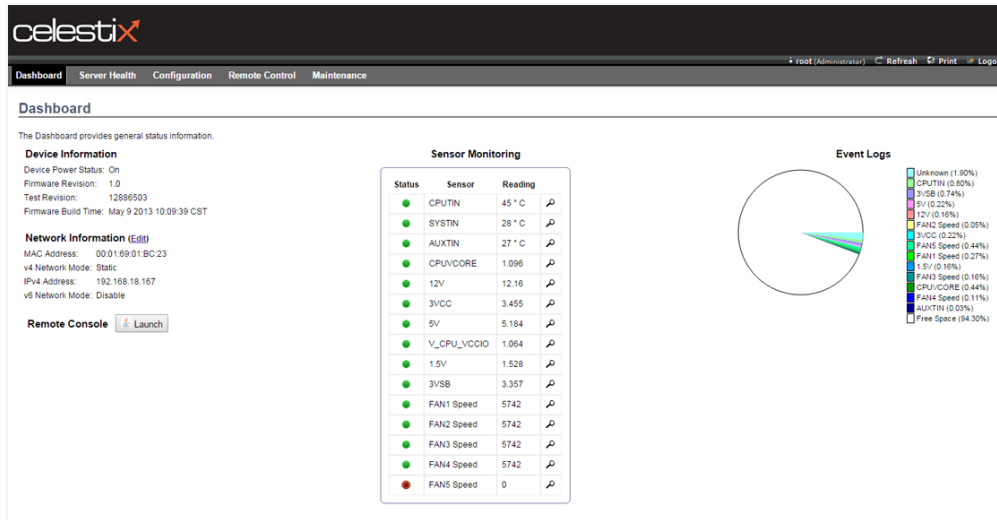


Illustration 2: UI View After Successful Login

Important: As a best security practice, change the root account password immediately.